

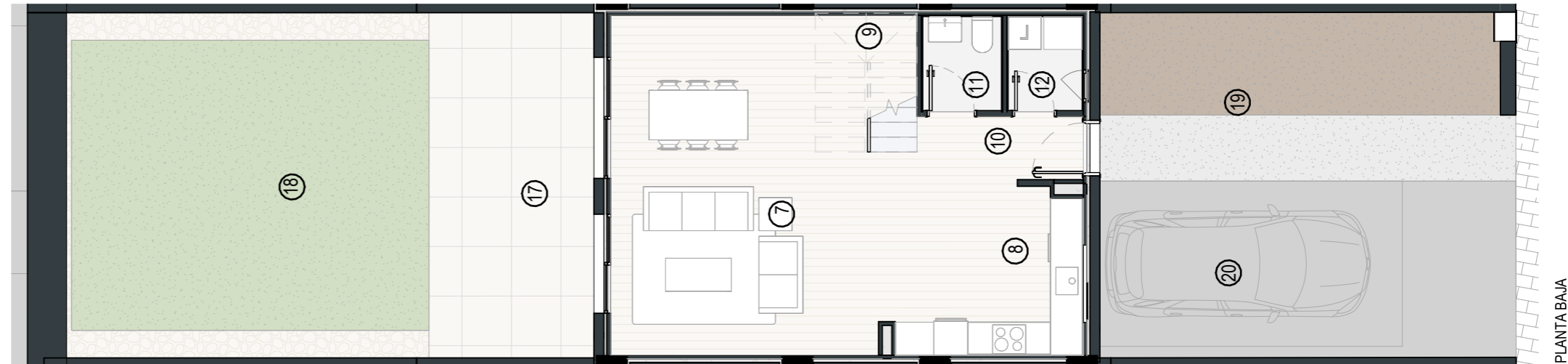
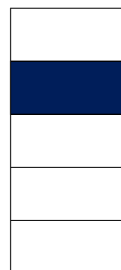
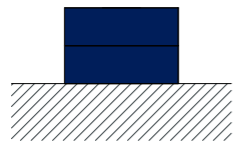
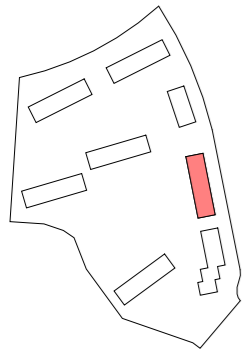
# VIVIENDA 25

SUP. ÚTIL VIVIENDA	98.53 m <sup>2</sup>
SUP. CONSTRUIDA VIVIENDA	115.80 m <sup>2</sup>
SUP. ÚTIL TOTAL	209.09 m <sup>2</sup>

## SUPERFICIES ÚTILES VIVIENDA

INTERIOR		
1	DORMITORIO 1	12.94
2	DORMITORIO 2	10.04
3	DORMITORIO 3	10.98
4	BAÑO 1	5.62
5	BAÑO 2	3.96
6	DISTRIBUIDOR	3.54
7	SALÓN-COMEDOR	28.79
8	COCINA	10.57
9	ESCALERA	4.78
10	DISTRIBUIDOR P1	2.41
11	ASEO	2.54
12	LAVADERO	2.36
		98.53

EXTERIOR		
17	TERRAZA DESCUBIERTA	19.65
18	JARDÍN PRIVATIVO	43.89
19	ACESSO PEATONAL	22.65
20	ACESSO RODADO	24.37
		110.56



PLANTA BAJA



PLANTA PRIMERA